

Chapter I: Preface

"Education is the manifestation of perfection, already in Man"

- Swami Vivekananda

Sarva Shiksha Abhiyan is a biggest ever flagship programme being implemented in the entire country with the objective of Universalising Elementary Education (UEE) by bringing all children in the age group of 6-14 years under the ambit of primary schooling, expanding schooling facility to all inaccessible un-served habitations, creating new school infrastructure and renovating / improving infrastructure of existing schools. Ultimately, this time bound programme aims at achieving the goal by providing education of satisfactory quality to the children for improving their human capabilities adequately, so that they may stand on their own and lead a successful life of prestige in the practical world of hazards. In conformity with other States and Union Territories of the country the programme was launched in the state in 2001-02 with a view to achieving the following goals in Universalising Elementary Education:

- Enrolment of all children in School, Education Guarantee Scheme Center, Alternate School, 'Back to School' Camp by 2005.
- Retention of all children in the schooling system till completion of their 8 years' elementary education.
- Bridging of gender and social category gaps in enrolment, retention and learning.
- Ensuring that there is significant enhancement in the learning achievement levels of children at the primary and upper primary stages.

During the course of its implementation in our state, SSA has gone a long way in bringing about a sea change in the educational profile of the state by way of enrolling out-of-school children and retaining them in the schooling system, effecting a sharp, tangible decline in drop-out rates, increase in transition rate, bridging gender and social gaps, training and motivating teachers to deliver education more effectively, involving community people in the education system, and so on.

Besides, a large number of assets have been created to facilitate the progress of education. Building of new educational infrastructure and renovating of the existing infrastructure, recruitment of capable human resource and enhancing their capabilities are to name only a few among many.

At such a point of time when SSA is nearing its culmination, it occurred to the authorities in SSA that the progresses made and the milestones reached by the programme till 2008-09 might be put down in a documented form for any future

educational reference / analysis / guidance etc. Hence, the endeavour of bringing out this documentation has been taken up.

Features of SSA Programme

Followings are the salient schematic features of Sarva Shiksha Abhiyan:

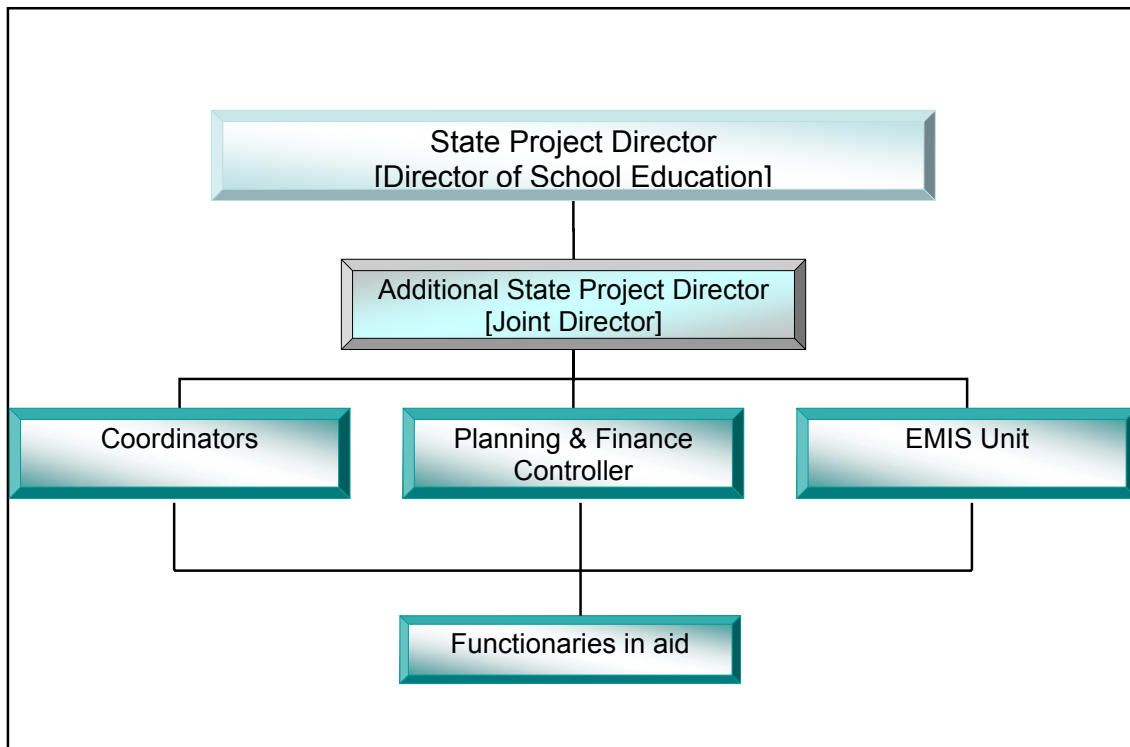
- ❑ Joint Venture programme between Central Govt. and States/Union territories.
- ❑ Framework programme –
 - To allow states to formulate context specific guidelines within overall National Framework.
 - To encourage districts to reflect local specificity in plans to promote local need based planning based on broad National policy norms.
 - To make planning a realistic exercise by adopting broad National norms.
- ❑ Undertaking preparatory activities before actual implementation of programme.
- ❑ Decentralised decision making system at all levels.
- ❑ Institutional capacity building for improvement in quality of elementary education.
- ❑ Using micro level data in planning.
- ❑ Setting up of Educational Management Information System.
- ❑ Data collection, compilation, verification and analysis through DISE.
- ❑ Conduct of child census every year for assessing progress in education and listing out residual requirement and needs at the habitation level.
- ❑ Formation of Planning Core Groups at the Village, Block, District and State level.
- ❑ Preparation of dynamic perspective plan.
- ❑ Preparation of Village Elementary Education Plan based on habitation level education plans.
- ❑ Preparation of District Elementary Education Plan based on Block Plans.
- ❑ Preparation of State Annual Plan consolidating District Annual Plans and that of the State Component.
- ❑ Opportunity for states to develop their own vision of elementary education.
- ❑ Community-based approach to planning with a habitation as a unit of planning.
- ❑ Ensuring full participation of disadvantaged children (SC, ST, RM) in education.
- ❑ Appraisal of plans at the Block, District, State and National levels.
- ❑ Programme implementation through a society.
- ❑ Missionary mode and dedicative mentality of all functionaries.
- ❑ Community participation and ownership of school-based interventions through effective decentralisation.
- ❑ Community-based monitoring with full transparency in all aspects of implementation.
- ❑ Continuous Supervision and Monitoring of programme at the National, State, District, Block, Village and School levels.
- ❑ Evaluation of programme at year ending.

- ❑ Maintaining transparency, economy, efficiency and openness.
- ❑ Audit of Accounts by internal audit team, CA firm, Comptroller & Auditor General of India.
- ❑ Maintaining joint account system at all levels.
- ❑ Programme implementation through committees at all levels.
- ❑ Civil construction through community participation and no provision of contract.
- ❑ Procurement of articles, goods and services through procurement plan and maintaining prescribed procedure.

Organisational Set-up

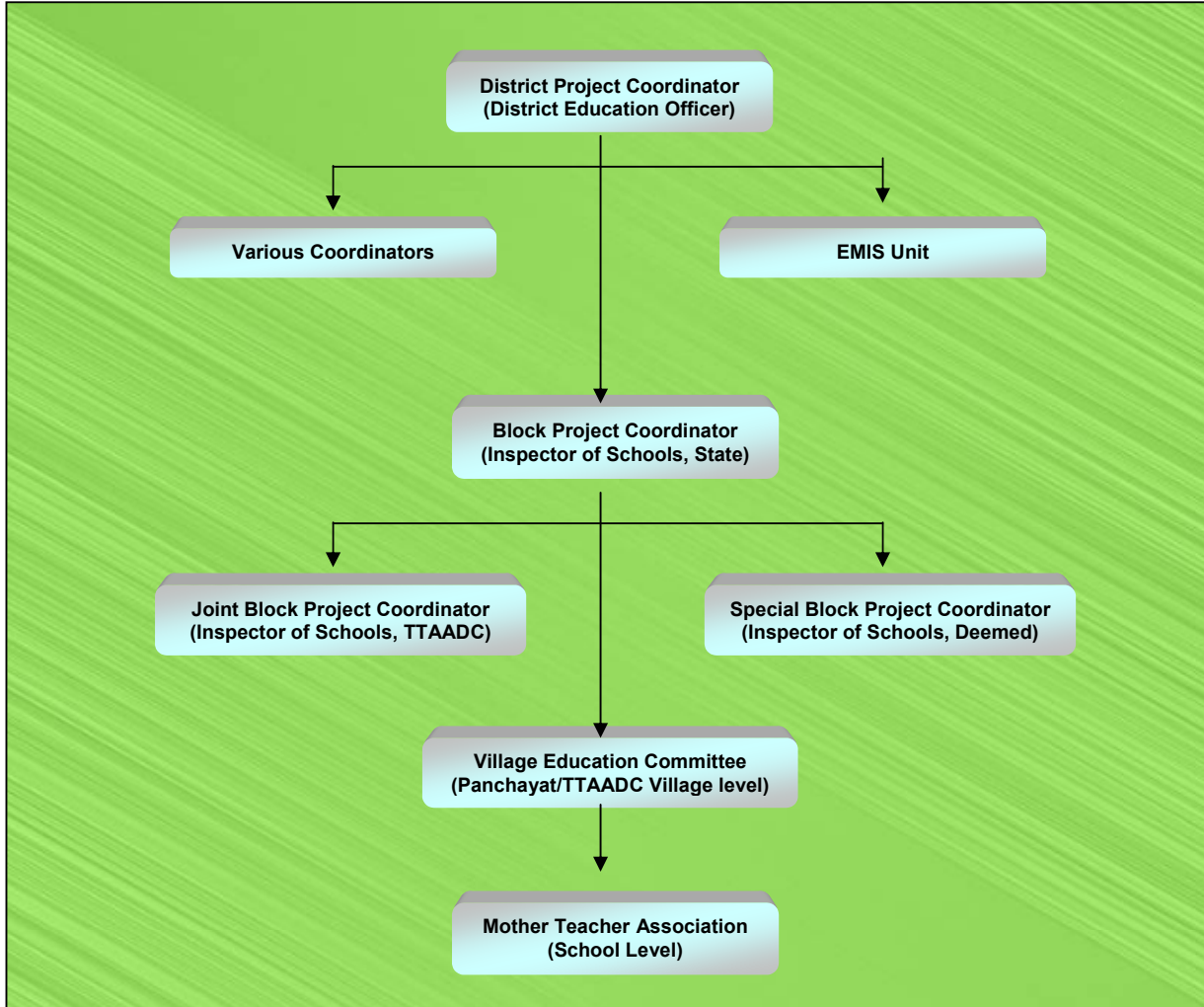
State Level

The organisational structure of SSA at the state level is given below.



District & Block Levels

The organisational set-up of SSA at the district and block levels is as follows.



Basic Information About Tripura

□ Area	10,491.69 sq. km
□ Population (2001 Census)	31,99,203
□ District	4
□ Zilla Parishad	4
□ Zilla Parishad Member	82
□ Sub-Division	17
□ Block	40
□ Municipal Council Area	1
□ No. of Municipal Council Ward	35
□ Autonomous District Council	1
□ TTAADC Member	30
□ TTAADC Village	527
□ Revenue Circle	31
□ Tehsil	183
□ Revenue Mouja	874
□ Panchayat Samiti	23
□ No. of Panchayat Samity Member	299
□ Gaon Panchayat	511
□ No. of Gaon Panchayat Member	5295
□ Nagar Panchayat	15
□ Habitation	7631
□ Household	6,99,116

• Population, Birth Rate, Sex Ratio, Density

The district-wise population of the State by sex and share of communities are presented in the following table:

District	Population:			SC	% of total	ST	% of total
	Male	Female	Total				
Dhalai	159095	148773	307868	49817	16.20	166326	54.00
North	302946	287967	590913	82902	14.00	150500	25.50
South	394605	372835	767440	127307	16.60	289519	37.70
West	785579	747403	1532982	295698	19.30	387081	25.30
State	1642225	1556978	3199203	555724	17.40	993426	31.10

Source: Census 2001

Birth Rate (2005) per 1000 population:	16.0
Death Rate (2005) per 1000 population:	5.7
Natural Growth Rate (2005) per 1000 population:	10.3
Density of Population:	304 per Sq. Km.

(Source)

- **Literacy – Male and Female (as per Census – 2001)**

District	Male	Female	Total	Gender Gap
Dhalai	70.20	51.00	60.90	19.20
North	80.00	65.60	73.00	14.40
South	78.90	60.30	69.00	18.60
West	84.60	69.60	77.30	15.00
Tripura	81.00	64.90	73.20	16.10

- **Literacy – SC and ST (as per Census – 2001)**

Caste	Male	Female	Total
<i>Scheduled Caste</i>	<i>81.9</i>	<i>67.2</i>	<i>74.7</i>
<i>Scheduled Tribe</i>	<i>68.0</i>	<i>44.6</i>	<i>58.5</i>

- **Schools in the State (as in February 2009)**

District	Primary School (I-V)					Upper Primary School (I-VIII)				High / Secondary School (I-X)					Higher Secondary School (I-XII)				Total School
	Govt.	TTAADC	Pvt. Aided	Pvt. Unaided	Total	Govt.	Pvt. Aided	Pvt. Unaided	Total	Govt.	TTAADC	Pvt. Aided	Pvt. Unaided	Total	Govt.	Pvt. Aided	Pvt. Unaided	Total	
West	327	440	09	14	790	395	1	10	406	193	1	4	13	211	126	23	8	157	1564
South	240	497	0	5	742	255	3	0	258	123	0	2	7	132	72	4	0	76	1208
North	151	182	1	14	348	258	0	5	263	74	0	1	5	80	47	7	0	54	745
Dhalai	71	424	1	2	498	209	0	3	212	34	0	0	2	36	22	2	0	24	770
State	789	1543	11	35	2378	1117	4	18	1139	424	1	7	27	459	267	36	8	311	4287

Source: Survey & Statistics Section, Education (School) Department.

Enrolment

Stage	Total	Girls	SC	ST
Primary (I-V)	4,63,521	2,25,684	88,022	1,99,153
Middle (VI-VIII)	2,19,846	1,07,711	48,762	71,629
Secondary (IX-X)	93,088	44,771	18,929	28,851
HS (XI-XII)	47,193	20,685	8,361	9,214
Total	8,23,648	3,98,851	1,64,074	3,08,847

Source: Survey & Statistics Section, Education (School) Department.

- **Coverage of Habitations in regard to access to education:**

Primary schooling:

- Total Habitations: 7631
- Habitations covered by Primary Schools up to 2008-09: 6779
- Habitations to be covered during 2009-10: 69
- Habitations to be covered up to 2009-10: 6848
- Habitations which may remain uncovered after 2009-10: 783 (not eligible for Pry. school as per state norms)

Upper Primary schooling:

• Total Habitations:	7631
• Habitations covered by Upper Primary Schools up to 2008-09:	6797
• Habitations to be covered during 2009-10:	167
• Habitations to be covered up to 2009-10:	6967
• Gap in upper primary school as per norms (2 : 1) to remain after 2009-10 :	215

Source: District Micro Planning